

कुंडहित आजीविका महिला किसान उत्पादक कंपनी लिमिटेड

ग्राम- गड़शिमला , पंचायत- अम्बा , प्रखंड- कुंडहित , जामताड़ा (झारखण्ड) पिन- 815359

CIN. No-U01619JH2024PTCO22238

पत्रांक- KAMKUC/L/2025-26/26

दिनांक- 08-01-2026

Notice Inviting Tender Under Limited Tender Method

KUNDAHIT AAJIVIKA MAHILA KISAN PRODUCER COMPANY LIMITED promoted under the JSLPS, RDD Dept, GOJ, has invited sealed tenders from different Manufacturers/ Distributors/Dealers with valid Suppliers for the **Supply & Installation Backyard Layer Poultry Shed and A type Two Tier Single Row Layer Cage for 100 Layer Birds**. Detailed terms & conditions and specifications and prescribed formats for submission of the tender are available in the office of KUNDAHIT AAJIVIKA MAHILA KISAN PRODUCER COMPANY LIMITED & the website of JSLPS e.g. www.jslps.in. **Quotations/Tender can be submitted via Speed Post/Normal Post/Courier/ or By Hand only**. Interested agencies/parties may submit their tender in a sealed cover super-scribing as **"Supply & Installation Backyard Layer Poultry Shed and A type Two Tier Single Row Layer Cage for 100 Layer Birds"** to the undersigned office on or before 15:00 hours on 22 January 2026.

Sd/-

Rekhna Hembrom

DIRECTOR

KUNDAHIT AAJIVIKA MAHILA KISAN PRODUCER COMPANY LIMITED

BID submission last date-22-01-2026 (03:00 PM)

BID Opening Date – 23-01-2026 (10:30 AM)

Copy to: Notice Board of JSLPS...../Website of JSLPS for Display.

- **Address for submission of Tender:** - FPO Office (JSLPS BMMU Kundahit office)
- (Near Kundahit Panchayat Bhawan), Kundahit ,Jamtara(Jharkhand) ,Pin:-815359
- Contact No :- 8409266823 , 8509120141

Rekhna Hembrom
DIRECTOR

Mallika Louha
DIRECTOR



कुंडहित आजीविका महिला किसान उत्पादक कंपनी लिमिटेड

ग्राम- गड़शिमला , पंचायत- अम्बा , प्रखंड- कुंडहित , जामताड़ा (झारखण्ड) पिन- 815359

CIN. No-U01619JH2024PTCO22238

पत्रांक- KAMKUCL/2025-26/26

दिनांक- 08-01-2026

TECHNICAL SPECIFICATION - SHED & CAGE DESIGN AND DRAWING - 100 LAYER BIRDS IN CAGE MODEL

Objective - Establishment of Backyard egg production units of 100 Birds Layer units at the Village/Panchayat Level in cage model operated by Didi's of Sakhi Mandal for the supply of produced eggs in the Mid-Day Meal and Anganwadi's Kendra's under ICDC Program.

Infrastructure - Shed Area in the 120 Sq ft (12x10) for the Accommodation of 100 Layer Birds in 1 Row A Type 2 tier Cage Model. The shed will be made of 50mm (2 Inch) Square Pipe and with roof in Blue sheet of thickness 0.40mm covered with Rice Straw for the protection from heat in a plug and installation model for the faster transportation, installation and execution at Village Level. East and west side of shed will be covered by sheet with thickness of 0.40mm with door of size 3x8 ft (Optional for east or South). Shed will have platform of 1ft each at all the side of cage for the movement of farmer for the feeding, water supply and egg collection. North and South side will be open for ventilation and air flow with net for the Protection.

Detailed Design and Drawing of shed with BOM (Bill of Material)

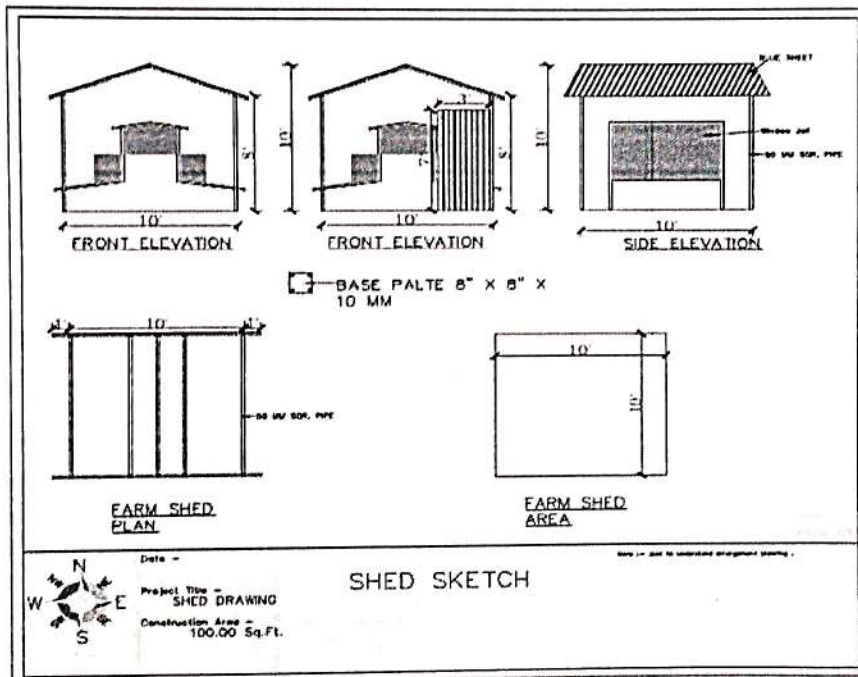


Figure 1- Actual Shed Length is 12x10 Ft

Reshma Hembrom

DIRECTOR

Malika Louha

DIRECTOR



कुंडहित आजीविका महिला किसान उत्पादक कंपनी लिमिटेड

ग्राम- गड़शिमला , पंचायत- अम्बा , प्रखंड- कुंडहित , जामताड़ा (झारखण्ड) पिन- 815359

CIN. No-U01619JH2024PTCO22238

S. No	Items	Size	Quantity	Weight/Thickness
1	Ms. Sq. Pipe	2 Inch	10 Pcs	14 KG+
2	Ms. Sq. Pipe	1.5 Inch	1 Pcs	8 KG+
3	Blue Sheet	6x3.5	8 Pcs	0.40mm
4	Blue Sheet	10x3.5	6 Pcs	0.40mm
5	Welding Rod	10 No.	1 PKT	
6	Cutting Wheel	6 Inch	6 Pcs	
7	Fastner & Bolts	10/20/25 NO.	150 Pcs	
8	Net (Side Jalli)	4Ft	50 FT	
9	Net (Darwaja)	3Ft	27 Ft	
10	Kabja	3 Inch	3 Pcs	
11	L Drop		1 Pcs	
12	Washer		20 Pc	
13	GI Wire	18 No	500 Gms	
16	Fabrication & Installation at IFC Beneficiary Level			
17	Power Back Up			
19	Cage Material, Fabrication & Installation	As Per Below Design. & Drawing	100 Birds	

Reshma Hembrom

DIRECTOR

Mallika Louha

DIRECTOR



कुंडहित आजीविका महिला किसान उत्पादक कंपनी लिमिटेड

ग्राम- गड़शिमला , पंचायत- अम्बा , प्रखंड- कुंडहित , जामताड़ा (झारखण्ड) पिन- 815359

CIN. No-U01619JH2024PTCO22238

Detailed Design and Drawing of cage with Specification

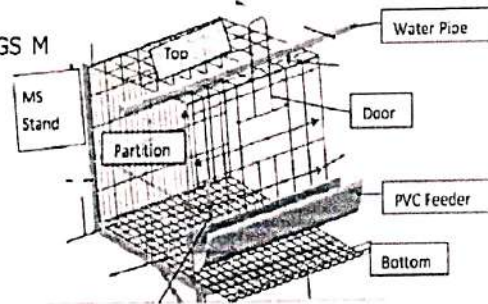
- Model of the Cage –1 RowA type 2 Tier with 5 Cage Box Model

Specification of material/Cage Box/ Layout/ Size

Sr	Description	Amount
1	CageDimensions	
	Rearheight	15inches
	Frontheight	17.5inches
	Depth	15inches
	FrontFeedingSpace	21inches
	No.ofbirdsinonecompartment	5
	Space perBird (square inch)	60
Box Bottom	Cage Area Per Row Maximum	9 Ft
	Cage Width Per Row Maximum	6.6 Inch
	Box Bottom Slope	1/6

2 Mesh Dimensions

Hot Galvanized Material made from 120 to 150GS M
Material (5 year warranty)
Cage Top Mesh 3.00mm
Cage Bottom Mesh 2.5mm
Partition mesh 3"x1"
Wire Die 2.5 mm
Door Mesh 3.5mm



3 Fabrication work

MS Frames 40mmx6mmx2 tier
MS Runner flat 25mm x 5 mm
WeldingRod, Anti Rust black Paint
Stand Leg Angle 35x35x5 mm

4 Feeding system

Feeder Layer round
Feeder joint & PVC Feeder
Clamps
Feeder End Caps

5 Drinking system

Double Lock layer Nipple (1inBox)
22 mmsq.Pipefor 20"Drill pipe
Watertank / Medicine Tank (5 Ltr) with 2
valves & Water View Pipe

Reshma Hembram

DIRECTOR

Mallika Louha

DIRECTOR



कुंडहित आजीविका महिला किसान उत्पादक कंपनी लिमिटेड

ग्राम- गड़शिमला , पंचायत- अम्बा , प्रखंड- कुंडहित , जामताड़ा (झारखण्ड) पिन- 815359

CIN. No-U01619JH2024PTCO22238

REQUEST FOR PROPOSAL (RFP)

FOR

Supply of Layer Pullets of "BV 300" Variety for Layer Farming

Scope of Work

The scope of work under this RFP is as follows:

- Delivery and induction of all pullets at all Backyard Layer Farms at the Village Level in ratio of 100 pullets each shed/farm.
- Species/ Bird Variety – BV 300.
- The supplier should have a pullet farm not more than 200 Km from the supply due to better acclimatization.
- The supplier is willing to facilitate visit to the pullet house to the JSLPS official/technical support agency/nominated person of FPO/CLF as and when required.
- Supplier should maintain all bills for vaccines purchased for use in the pullet rearing and produce to FPO as per the demand.
- Standard Body Weight as Specified in Annexure-I
- The vendor is responsible for ensuring that pullets are vaccinated in accordance with the prescribed schedule (please refer to Annexure II for details).
- Flock Uniformity minimum 80%
- Record of Vaccination schedule, Medicine & feeding schedule should be maintained and to be provided to FPO/CLF at the time of delivery
- Record of Body Weight on weekly Basis and provide to FPO at weekly interval.
- All the lodging, boarding, and other expenses related to the supply of pullets (BV300) are to be borne by the bidder.
- The vendor must provide a certificate issued by a qualified Nominated veterinarian from JSLPS confirming the excellent health and absence of diseases in the pullets.
- The vendors are responsible for coordinating the transportation of pullets from the supplier's site to in the allocated sites, with a primary focus on ensuring the safety, security, and adherence to all applicable regulations throughout the transportation procedure.

Technical Specification: Anexure-1

Performance Goal Desired: -

Roshma Hansram

DIRECTOR

Malika Louha

DIRECTOR



कुंडहित आजीविका महिला किसान उत्पादक कंपनी लिमिटेड

ग्राम- गड़शिमला , पंचायत- अम्बा , प्रखंड- कुंडहित , जामताड़ा (झारखण्ड) पिन- 815359

CIN. No-U01619JH2024PTCO22238

1. Livability %		
0 – 18 weeks		96-97
19 – 80 Weeks		93
2. Feed Intake		
0 – 18 weeks		5.6 KG
19 –72 Weeks		41.0 KG
19 - 80 Weeks		46.6 KG
3. Body Weight		
At 90 days of Age		1000 gm
At 18 weeks of Age		1.22 KG
At 35 weeks of Age		1.50 KG
At 80 weeks of Age		1.55 KG
5. Sexual Maturity %		
Age at 50% of Lay		20-21 Week
Age at 90% of Lay		23-24 Week
6. Egg Production		
Peak Production		96-97 %
Egg Production above 90%		36 Week
Total Hen Housed Eggs for 72 Weeks		330
Total Hen Housed Eggs for 80 Weeks		374
7. Egg Weight		
Egg Weight at 23 weeks of age		50g
Egg Weight at 29 weeks of age		56g
Average Egg Weight		57g
8. Feed Conversion		
Feed/Egg for 19-80 Weeks of Age		125g
(Avg. ME 2550 Kcal/KG)		
9. Egg Characteristic		
Shell Colour		White
Shell Breaking Strength		Ideal

Reshmi Hambrao

DIRECTOR

Mallika Lenka

DIRECTOR



कुंडहित आजीविका महिला किसान उत्पादक कंपनी लिमिटेड

ग्राम- गड़शिमला , पंचायत- अम्बा , प्रखंड- कुंडहित , जामताड़ा (झारखण्ड) पिन- 815359

CIN. No-U01619JH2024PTCO22238

Annexure II

Vaccination Schedule Desired: -

ANNEXURE - 1

LAYER BIRD MEDICINE & VACCINATION SCHEDULE			
DAYS	MEDICINE /VACCINE	TYPE	Doses
1	42000 Pullet Chicks Received		
1	IBH 120	VACCINE	.2ml / Chicks
1	JAGGERY	JAGGERY	1 GM / LTR of Water
1	STRESSVEL	MEDICINE	5ML /100 CHICKS
1	ACIPRO WS	MEDICINE	1 GM / LTR of Water
1	VENDOX N	MEDICINE	1 GM / LTR of Water
1	MINPRO XP	MEDICINE	100 ML / 1000 CHICKS
2	MARREKS HVT + SBI	VACCINE	.2 ml / Chicks
2	Above MEDICINE REPEAT AS PER SCHEDULE		
3	Above MEDICINE REPEAT AS PER SCHEDULE		
4	Above MEDICINE REPEAT AS PER SCHEDULE		
5	INFECTION BURSAL DISEASE (IBD) INTERMEDIATE PLUS	VACCINE	.3 ml / Chicks
5	NEWCASTLE DISEASES VACCINE MASTER CLONE (NDV)	VACCINE	.3 ml / Chicks
5	Above MEDICINE REPEAT AS PER SCHEDULE		
6	Above MEDICINE REPEAT AS PER SCHEDULE		
6	NBD GUARD	VACCINE	.3 ml / Chicks
6	INFECTION BURSAL DISEASE (IBD)	VACCINE	.3 ml / Chicks
6	NEWCASTLE DISEASES VACCINE MASTER CLONE (NDV)	VACCINE	.3 ml / Chicks
7	Normal water		

Reshma Hansram

DIRECTOR

Mallika Louha

DIRECTOR



कुंडहित आजीविका महिला किसान उत्पादक कंपनी लिमिटेड

ग्राम- गड़शिमला , पंचायत- अम्बा , प्रखंड- कुंडहित , जामताड़ा (झारखण्ड) पिन- 815359

CIN. No-U01619JH2024PTCO22238

8	SAFE GUARD	MEDICINE	1 ML / LTR WATER
9	B-904	MEDICINE	150 ML / 1000 CHICKS
10	DEBEAKING		
11	SAFE GUARD	MEDICINE	1 ML / LTR WATER
11	VITAMIN K	MEDICINE	150 ML / 1000 CHICKS
11	FERRIMINE P	MEDICINE	150 ML / 1000 CHICKS
12	IBD INTERMEDIATE PLUS	VACCINE	Single dose eye drop
13 to 15	Heppawel	MEDICINE	150 ML / 1000 CHICKS
	SAFE GUARD	MEDICINE	1 ML / LTR WATER
	BEXOLIVE/HEPPAWEL	MEDICINE	150 ML / 1000 CHICKS
16 to 18	Ventrimisole	MEDICINE	5gm / 1000 Chicks
19	BV CLO2	MEDICINE	10GM/ 2000 LTR of Water
20	IBD INTERMEDIATE PLUS	VACCINE	Single dose eye drop
21	Plane water		
22	BV CLO2	MEDICINE	10GM/ 2000 LTR of Water
23	SAFE GUARD	MEDICINE	1 ML / LTR WATER
24	STRESSVEL	MEDICINE	5ML /100 CHICKS
24	ACIPRO WS	MEDICINE	1 GM / LTR of Water
24	VENDOX N	MEDICINE	1 GM / LTR of Water
24	MINPRO XP	MEDICINE	100 ML / 1000 CHICKS
24	Heppawel	MEDICINE	150 ML / 1000 CHICKS
24	Ventrimisole	MEDICINE	5gm / 1000 Chicks
25	SAFE GUARD	MEDICINE	1 ML / LTR WATER
26	SAFE GUARD	MEDICINE	1 ML / LTR WATER
27	VENDOX N	MEDICINE	1 GM / LTR of Water
28	SOLUTILE	MEDICINE	10 GM / BIRDS

Rebhina Hambaram

DIRECTOR

Mallika Louha

DIRECTOR



कुंडहित आजीविका महिला किसान उत्पादक कंपनी लिमिटेड

ग्राम- गड़शिमला , पंचायत- अम्बा , प्रखंड- कुंडहित , जामताड़ा (झारखण्ड) पिन- 815359

CIN. No-U01619JH2024PTCO22238

29			
30	IB MASS + LASOTA	VACCINE	Drinking Water Single Dose
31	BV CLO2	MEDICINE	10GM/ 2000 LTR of Water
32	Kampro H (COCCI Medicine)	MEDICINE	1 GM / LTR of Water
33	SAFE GUARD	MEDICINE	1 ML / 5 Ltr Water
34	FERRIMINE P	MEDICINE	150 ML / 1000 CHICKS
35	BV CLO2	MEDICINE	10GM/ 2000 LTR of Water
36	VVND LP	VACCINE	.5 ml / Birds S/C
37	VVND LP	VACCINE	.5 ml / Birds S/C
38	STRESSVEL	MEDICINE	150 ML / 1000 CHICKS
39 to 44	Elimin 8	MEDICINE	1 ML / 2 Ltr Water
45	PIGEON POX	VACCINE	I / M
46	STRESSVEL	MEDICINE	150 ML / 1000 CHICKS
47 to 49	Kampro H (COCCI Medicine) Ferrimine P Safe Guard	MEDICINE	1 GM / LTR of Water 150 ml / 1000 Chicks 1 ml / 5 ltr Water
50 to 53	SAFE GUARD	MEDICINE	1 ML / 5 Ltr Water
54	MICRO PLAZMA (AZITHROVET)	MEDICINE	250GM / TON FEED
TO	CTC	MEDICINE	1 KG / TON FEED
57	LASOTA	VACCINE	Drinking Water (1.25 TIME DOSE)
58	SAFE GUARD	MEDICINE	1 ML / 5 Ltr Water
59	SAFE GUARD	MEDICINE	1 ML / 5 Ltr Water
60	CORIZA KILLED	VACCINE	.5ML / BIRD S/C
61	CORIZA KILLED	VACCINE	.5ML / BIRD S/C
62	BV CLO2 VENLITE TAB	MEDICINE	10GM/ 2000 LTR of Water 1 TAB / 100 LTR WATER

Rehman Hamsaram

Malika Louha

DIRECTOR

DIRECTOR



कुंडहित आजीविका महिला किसान उत्पादक कंपनी लिमिटेड

ग्राम- गड़शिमला , पंचायत- अम्बा , प्रखंड- कुंडहित , जामताड़ा (झारखण्ड) पिन- 815359

CIN. No-U01619JH2024PTCO22238

63	BV CLO2 VENLITE TAB JAGGERY	MEDICINE	10GM/ 2000 LTR of Water 1 TAB / 100 LTR WATER 30 GM / LTR WATER
64	BV CLO2 VENLITE TAB JAGGERY	MEDICINE	10GM/ 2000 LTR of Water 1 TAB / 100 LTR WATER 30 GM / LTR WATER
65	MEVZOLE	MEDICINE	1 GM / 5KG Body weight
66	SAFE GUARD VENLITE TAB	MEDICINE	1 ML / 5 Ltr Water 1 TAB / 100 LTR WATER
67	SAFE GUARD VENLITE TAB	MEDICINE	1 ML / 5 Ltr Water 1 TAB / 100 LTR WATER
68	SAFE GUARD VENLITE TAB	MEDICINE	1 ML / 5 Ltr Water 1 TAB / 100 LTR WATER
69	SAFE GUARD VENLITE TAB JAGGERY	MEDICINE	1 ML / 5 Ltr Water 1 TAB / 100 LTR WATER 30GM / LTR WATER
70	VENBRO MN	VACCINE	.5ML / BIRD S/C
71	VENBRO MN	VACCINE	.5ML / BIRD S/C
72 TO 76	SAFE GUARD JAGGERY	MEDICINE	1 ML / 5 Ltr Water 30GM / LTR WATER
TO	SAFE GUARD JAGGERY	MEDICINE	1 ML / 5 Ltr Water 30GM / LTR WATER
76	SAFE GUARD JAGGERY	MEDICINE	1 ML / 5 Ltr Water 30GM / LTR WATER
77	R2B	VACCINE	.5ML / BIRD S/C
78	R2B	VACCINE	.5ML / BIRD S/C
79	Plane water JAGGERY		30 GM / LTR WATER
80	Plane water JAGGERY		30 GM / LTR WATER
81 TO 83	MICRO PLAZMA (AZITHROVET) CTC	MEDICINE	250GM / TON FEED 1 KG / TON FEED

Reshma Hembram

Mallika Louha

DIRECTOR

DIRECTOR



कुंडहित आजीविका महिला किसान उत्पादक कंपनी लिमिटेड

ग्राम- गड़शिमला , पंचायत- अम्बा , प्रखंड- कुंडहित , जामताड़ा (झारखण्ड) पिन- 815359

CIN. No-U01619JH2024PTCO22238

84	SAFE GUARD JAGGERY	MEDICINE	1 ML / 5 Ltr Water 30GM / LTR WATER
85	FOWL POX	VACCINE	.2ml I/M
86	Plane Water		
87 to 89	Kampro H (COCCI Medicine) Ferrimine P Safe Guard	MEDICINE	1 GM / LTR of Water 150 ml / 1000 Chicks 1 ml / 5 ltr Water
90	BV CLO 2	MEDICINE	10GM/ 2000 LTR of Water
91 94	SAFE GUARD VENTLYTE TAB	MEDICINE	1 ML / 5 LTR WATER 1 TAB/ 100 LTR of Water
95	IB MASS + LASOTA	VACCINE	Drinking Water
96 To 111	Elimin 8 VENTLYTE TAB	MEDICINE	1 ML / 2 Ltr Water 1 TAB/ 100 LTR of Water
112	LP HP COMBINED	VACCINE	0.5ML / BIRDS

Reshmi Hambaram

Mallika Louha

DIRECTOR

DIRECTOR

